

camrivoXTM

**Step-by-Step: Running Flexor Software for
the first time**

Flexor Software: Welcome - Windows Internet Explorer

https://uc.camrivo.com/uc/ui/FlexorUC.html?m=1#

flexor software

Download Flexor Software Now... Include [CTI icon] for Outlook

Noel Maurice IndieBerlin Logout

- Windows Mail
- Windows Media Player
- Windows Meeting Space
- Windows Movie Maker
- Windows Photo Gallery
- Windows Update
- Accessories
- Advanced GIF Animator
- avast! Antivirus
- BBC iPlayer Download Manager
- Camrivo Flexor Software
- Flexor Manager
- MS Dynamics CTI
- Salesforce CTI
- Corel Business Tools
- Corel Paint Shop Pro Photo X2
- CutePDF
- Diskeeper Corporation
- Extras and Upgrades
- Games
- Google Desktop
- ImageSkill
- iTunes
- Lenovo Care

Paul

Documents

Pictures

Music

Search

Recent Items

Computer

Network

Connect To

Control Panel

Defa

Help

User Guides Flexor Software FAQ Submit A Query

First Time Users Click Here

flexor

Buy/Try Software

Forgotten username or password? Do you need support?

Start Search

Protected Mode: On 100%

Reseller Form ... iTunes Camrivo - CT... Flexor Softwar... Getting Starte... Corel Paint Sh... 16:00

If Flexor does not run automatically, click on the **Start Menu**, select All Programs and scroll up to Camrivo Flexor Software. Click on **Flexor Manager**

Getting started with Camrivox Flexor Software



Welcome Check (Stage 1 of 4)



- Welcome Check
- License Check
- Find Devices
- Summary



This wizard will help you setup Flexor Software for the first time.

You can see the progress of the setup on the left hand side
When each 'light' is green setup is complete.

When each stage is complete a continue button will appear
Click this to move to the next stage.

Checking validation server connection ... OK.

Continue >>

Running Flexor for the first time initiates the **Flexor Welcome Wizard**. This helps you to check your licence and locate and identify your telephony

Getting started with CamrivoX Flexor Software



License Check (Stage 2 of 4)



Welcome Check

License Check

Find Devices

Summary

Please select one of the following options:

I have registered for a Flexor Software account and have a Flexor User ID and password. I wish to login to start using Flexor Software.

Login Now

I do not have a Flexor Software account and would like to register now for a Flexor User ID and password, so that I can start using Flexor Software.

Register Now

I am an existing customer who has a Flexor License Bundle key and I wish to enter the key to start using Flexor Software.

Enter Key

If you do not have a key then please Register or Login.

Select the option that is most appropriate to you

Getting started with Camrivox Flexor Software



Find Devices (Stage 3 of 4)



- Welcome Check
- License Check
- **Find Devices**
- Summary

To use any of the following you need to find a specific device to use:

Flexor Connect for Snom IP Phones

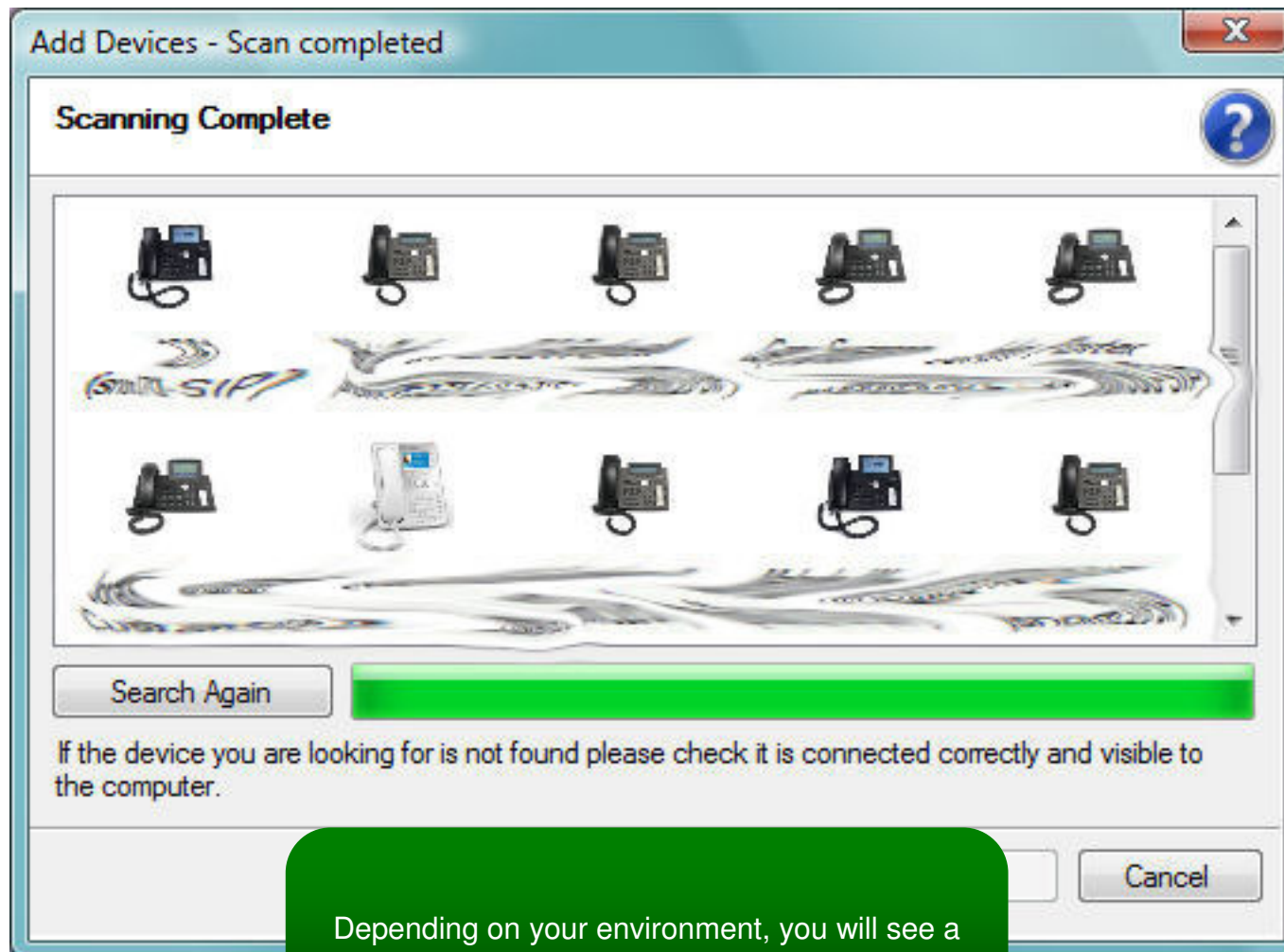
Note products already configured.

Select the products you wish to search for and click Continue >>

Continue >>

Select the telephony you wish to add and click
Continue

ue the software will open a window for
s.



Depending on your environment, you will see a number of devices to select from. Locate your personal device and click Add

Getting started with Camrivox Flexor Software



Summary (Stage 4 of 4)



- Welcome Check
- License Check
- Find Devices
- **Summary**

Congratulations - Flexor Software is ready for use!

The following are installed and ready for use:

Applications

Flexor CTI for Microsoft Dynamics

This application provides Computer Telephony Integration for Microsoft Dynamics.

Flexor CTI for Salesforce

This application provides Computer Telephony Integration with salesforce.com's Salesforce CRM solution.

Flexor CTI for Microsoft Outlook

This application provides Computer Telephony Integration for Microsoft Outlook.

Flexor CTI for Netsuite

This application provides Computer Telephony Integration for Netsuite

Devices

Flexor Connect for Snom IP Phones

Finished

Setup is now complete!